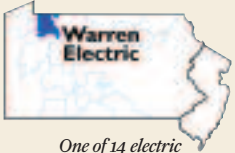


# Warren Electric Cooperative



One of 14 electric cooperatives serving Pennsylvania and New Jersey

Warren Electric Cooperative  
 320 East Main Street  
 Youngsville, PA 16371  
 814/563-7548  
 OR  
 1-800-364-8640  
 FAX  
 814/563-7012  
 Email  
 wec@westpa.net  
 Website  
 www.warrenec.coop

STAFF

- Gary W. Franklin,**  
General Manager/CEO
- Alan D. Fuller,**  
Engineer/Load Mgt/Member Services/  
Right-of-Way
- Todd M. McClain,**  
Data Processing/Finance/Administration
- Martin J. Hoffner,**  
Line Superintendent
- Christopher N. Evans,**  
System Engineer

BOARD OF DIRECTORS

- Dave Turner**  
Chairman
- LeRoy Wells**  
Vice Chairman
- Gerald G. Bensink**  
Secretary
  
- John Barnes**
- James Goodrich**
- Don Johnson**
- James Marshall**
- Esther Reynolds**

EMERGENCY OUTAGE NUMBER

814/723-9460

OFFICE HOURS

7:30 a.m. - 4 p.m.

FROM THE MANAGER

## Interested in serving on the board of directors?

**THE BOARD** of directors will be appointing a qualified member to fill an unexpired term as director.

If you are interested in serving as a board member of Warren Electric Cooperative, please fill out the coupon below or call or email the office no later than March 29, 2010, for a director application.

### Office happenings

The cooperative welcomed 26 new members in December. That brings our membership up to 7,810 and our connected accounts to 8,832.

### Bad checks!!

The cooperative receives its share of bad checks each month from members paying their electric bills. We charge \$25 for a bad check-processing fee and we do prosecute those who have issued more than one bad check. The cost of processing bad checks is increasing, and it is only fair that those who issue the bad check pay the costs.

### Paying your electric bill

You now have several options to pay your electric bill. You can continue to write a check, and mail your check and bill stub to the cooperative office.

Or you can view your bill on the internet, and pay by credit card or electronic transfer from your checking account. Simply log on to the cooperative website at [www.warrenec.coop](http://www.warrenec.coop) and click on "Click to Pay."

If you do not have internet service, you can still pay your bill over the phone using your credit card or electronic transfer by calling 800/291-3590.

### Call before you dig

With the arrival of spring around the corner, many members are gearing up for outdoor construction projects. If these projects involve excavating or moving

earth with power equipment, please be aware that state law requires those performing the work to notify the Pennsylvania One Call System at least three working days before digging begins.



The purpose of Pennsylvania One Call is to prevent damage to underground facilities such as electric, cable, telephone, gas, water and sewer lines during excavation. Digging by an uninformed homeowner or contractor not only has the potential to damage utility lines, it can also be extremely dangerous when underground electric or gas lines are involved. There is no charge for a homeowner doing work on his or her own residential property. Get your project off to a safe start. ☀

Thank you,  
 Gary W. Franklin

## Board of directors interested candidate

Name \_\_\_\_\_  
 Address \_\_\_\_\_  
 \_\_\_\_\_  
 Phone Number \_\_\_\_\_  
 Account Number \_\_\_\_\_

*Send, call or email if you are interested in being a candidate for the Warren Electric Cooperative Board of Directors. A director application will be sent to you.*

Send to: Warren Electric Cooperative  
 Director Appointment  
 320 E. Main Street Youngsville, PA 16371  
 OR  
 Call 800/364-8640  
 Email: [gwf.wec@westpa.net](mailto:gwf.wec@westpa.net)

# Pennsylvania Kinzua Pathways

BY ANITA COHAN

**THE PENNSYLVANIA** Kinzua Pathways (PKP) group rose out of a project conducted by last year's Leadership Warren County program that called for its participants to "connect the dots" around the Allegheny Reservoir.

Kinzua Dam, Visitors Center, Wolf Run Marina, Kinzua Beach, Rimrock and Jake's Rocks are currently connected only by highway. The plan is to develop interpretive trail systems, improved water access and a water taxi system in the area with the goal of creating awareness and generating revenue sources through tourism and recreation.

The proposed changes would attract tourists and encourage local nature lovers to spend days traveling from site to site, capitalizing on the beauty and natural resources of the reservoir.

## Mission statement

The mission of the PKP is to attract visitors to the area surrounding the Allegheny Reservoir, educate them about the rich history of its past, provide facilities to enjoy the present, and enhance



**MORRISON BRIDGE:** Allegheny wilderness and manmade accomplishments complement each other with breathtaking beauty.

wilderness access and stewardship for the future. The organization plans to enhance the area and promote it as a destination in order to generate interest in the area's resources, history and sites, as



**NEW KINZUA POINT:** Inscale PC, a Warren architect firm, generously donated conceptual drawings for this project, including this design of the new Kinzua Point center.

well as revenue for the county for generations to come. PKP members are focused on the reservoir/dam area, which they find to be one of the key areas needed to stimulate Warren County's tourism and recreation industry.

Following the conclusion of last year's Leadership Warren County program, three participants, Joe Colosimo, Ines Nelson and Coralee Wenzel, decided to continue forward with the Kinzua Pathways proposal.

"We have such a cultural and historical heritage in this area that no one knows about," Joe notes. "We live here, so we are fortunate to know about the Seneca and their history. When other people visit, they think it's a reservoir and some trees."

These team members are working to promote the project through partnerships with local and regional organizations, and continuing to gain knowledge and information to help with the development of the project.

PKP members have conducted two formal presentations, spoken at more than a dozen community service and other club functions, and held over 60 other

meetings with groups and individuals. During the formal presentations, PKP surveyed those attending, and modified recommendations based on feedback received. The group has presented its formal findings to the Allegheny National Forest (ANF) management team, and will be submitting the proposals for public opinion and environmental analysis where appropriate.

## Connect the dots

PKP is a multi-year, multi-phase, multi-million dollar system of projects. Each pathway will require additional overlays of the projects and will represent the efforts of multiple stakeholders' input and ideas. The group has identified several key pathways and will follow with a formal interpretive signage plan intended to enhance and enrich the visitor experience.

Areas to be included are:

- ▶ Bicycling and hiking path from Kinzua Beach to Rimrock,
- ▶ Miles of looping mountain biking and hiking trails between Long House Drive and Upper Reservoir,
- ▶ Revitalizing Kinzua Point,
- ▶ 2.8-mile walking and bicycling path from Kinzua Point to the Kinzua Dam upper parking area,
- ▶ Bicycling and hiking path around the

- southern tip of the reservoir from Longhouse Drive to Kinzua Beach,
- ▶ Walking and bicycling path from Wolf Run Marina to Kinzua Beach, and
- ▶ Revitalization of Kinzua Beach.

It has been suggested that revitalization of Kinzua Point would include razing the current Information Center followed by construction of a new, family-friendly, interactive, multifunctional learning and visitor center. Unlike other portions of the project, Kinzua Point is visible from both Route 59 and the reservoir. The new center would be expected to serve as a main hub for other trails and projects associated with the PKP master plan.

### Virtual PKP

The first formal phase of the PKP project focused on raising public awareness, building partnerships, and delivering a formal finding and recommendation report to the ANF.

Virtual PKP represents the second formal phase as a strong online presence, with an interactive website that will track progress, educate and guide, in addition to serving as a hub for the marketing and social networking plan. The website will

describe the vision in detail with abundant photography to support each pathway, and track progress as portions of the project move forward. The site will contain links to entities involved and opportunities to facilitate real-time communication. The educational, historical and stewardship aspects of the project will be the driving force behind PKP's online marketing efforts. Information about the land, the people and the history of the area will be available.

PKP currently maintains a Facebook group and is in the process of developing a newsletter that will be distributed via email and also will be available for download through the website.

Ines focuses on the developing the PKP brand.

"At the core of the project is a powerful marketing plan that will promote the area as a whole," Ines emphasizes. "As volunteers not bound by geographical or political boundaries, we can broaden the focus to enhance the total experience. This spring, we will launch the Pennsylvania Kinzua Pathways website, [www.pennsylvaniakinzuapathways.com](http://www.pennsylvaniakinzuapathways.com), funded by the Community Foundation of

Warren County's 60th anniversary grant, awarded by public vote. The website will not only track progress and provide opportunities to support the project, but will also serve as an informational hub for visitors and locals alike."

### Funding sources

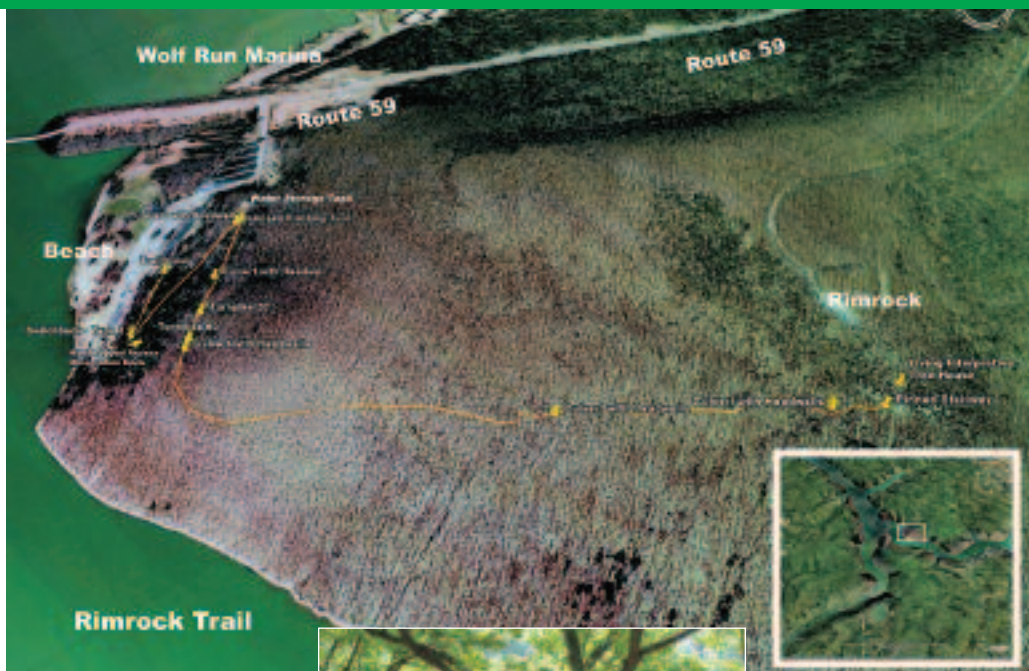
Sustainability is the key to this project. The project takes in the importance of meeting the needs of the present without compromising the ability of future generations to meet their own needs. As for funding suggestions — both federal and grant funding would be specifically designated for use on the Pennsylvania Wilds project, while interpretation, educational and historical references will be designed, implemented and funded through grants and other partnerships. ANF is a federal asset and would handle the costs associated with establishing these projects. Once completed, the state and local governments would derive the most benefit from the project's existence and would be expected to provide funds. Sustainability funds would be placed in the trust of the Pennsylvania Wilds specifically noting that it is to be used for the sustainability of these projects.

The project outlines a three-, four- and five-year example of costs. Grants will cover design, preparation and administration estimated to cost \$7.5 million. Federal funds will be used for implementation and construction costs anticipated to be \$32 million. The project is expected to be sustained through state funding.

Last fall, the Community Foundation of Warren County announced it would present a one-time grant of \$10,000 to a selected applicant to celebrate the foundation's 60th year in existence. The check for \$10,000 was awarded to PKP. There were 22 applicants, which were narrowed down to just 10 organizations that were posted on the foundation's website. The public then voted for the winner. Building  
*(continues on page 14d)*



**REVITALIZATION PLANNED:** A canoe just below the Kinzua Dam, established in 1965, highlights recreational possibilities on the Allegheny River. The PKP project will help bring this area into the future with revitalization of existing sports and facilities.



**MAPPED OUT:** Warren County Career Center students presented a proposed map to the ANF for the Rimrock Trail. Key features include handicapped access to the observation platform and living interpretive tree house.



relationships is a key portion of the PKP project. For submission of this grant application, PKP teamed with Penn Soil Resource Conservation and Development Council.

Pennsylvania Kinzua Pathways will provide both services and activities of lasting value for individuals, the community and the region.

Joe Colosimo adds, "First and foremost, PKP is a historical awareness and connectivity project. It represents more of an experience than a destination."

### Gaining strong support

All plans have a mission, a clear direction and a projected outcome, but the PKP has an additional factor that makes up a solid foundation: support. Support is obvious by the numerous letters received from individuals, foundations, businesses and government agencies. The growing number of partners includes the Allegheny National Forest, Pennsylvania Department of Transportation, Warren County Planning and Zoning Commission, Pennsylvania Wilds director, Pennsylvania Lumber Heritage Region, Penn Soil RC&D Council, Warren County recreation director, Warren County Visitors

Bureau, Warren Public Library, Tuna Valley Trail Association, Northern Allegheny Mountain Bike Association, Warren County Career Center, International Mountain Bike Association, Inscale PC, H PE Transystem, Council on Tourism, Warren County Historical Society, McKean County Visitor Bureau, and many more business and individual associates.

"Fostering partnerships is at the core of the Pennsylvania Kinzua Pathways plan," PKP team member Coralee Wenzel says. "We are pleased that we were able to bring key groups together."

Coralee, team member and also a WEC member, affirms, "We were not paid to develop this project. We are not reaping any personal benefit from this project; this project is about the respect and love we have for the area where we live. We want to make sure that any generation ... will have the opportunity to see what events created our community. The sacrifices that were made in our area deserve to be recognized and appreciated right along with the incredible natural surroundings. Our focus from the beginning has been about working with others to determine the best way to achieve success for this project. We have much to be thankful for and to enjoy right in our backyard and as each pathway of the

project is completed, more and more people will get the opportunity to see and experience it firsthand."

### Imagine

Team members include the following annotation in all their planning:

"Imagine with us a reservoir area with an extensive, unique trail system — one that not only connects visitors to nature, but also to the people and events that went before them, to the history that shaped this beautiful corner of the Allegheny National Forest.

Imagine the outdoor enthusiasts, people of all skill levels and walks of life, who will return year after year to enjoy this gem and be inspired to take care of it and share it with others. Imagine the invaluable lessons of life, nature, history and stewardship to be learned generation after generation. Imagine the powerful legacy that will remain long after we are gone and the collective pride generated by the result of citizens and government working together for a common goal — a better future. Imagine, finally, an Allegheny National Forest where visitors from near and far can spend hours, days and even weeks interacting with nature and building stronger bonds while being enriched by the Pennsylvania Kinzua Pathways experience."

For more information, or if you are interested in joining PKP, please email [pakinzuapathways@yahoo.com](mailto:pakinzuapathways@yahoo.com). ☀

### 17th Annual Chili Festival

Cherry Grove, Pennsylvania  
 Sunday, March 21, 2010  
 1 p.m. to 4 p.m.  
 Located six miles up Cherry Grove Road off Route 6  
 Turn across from Johnson's Tire Center in Weldbank  
 Free admission  
 Chili-tasting tickets are 25 cents each  
 No entry fee  
 Call Zane Johnson at 814/688-5291 for an entry form